

SMD Ceramic Resonator

RTC Series



(Built-in Capacitors)

(3 Pads SMD)

Features:

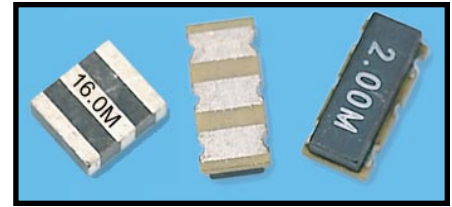
- Low profile
- Industry standard dimensions.
- Built-in capacitance load.
- Wide frequency range.
- High reliability.
- Tape & Reel

Dimensionn:

- RTCC: 7.4 x 3.4 x 1.8mm
- RTCS: 4.7 x 4.1 x 1.6mm
- RTCV: 3.7 x 3.1 x 1.2mm

- RoHs Compliant (Pb Free)

- Exemption according to RoHs Directive 2002/95/EC Annex point 7

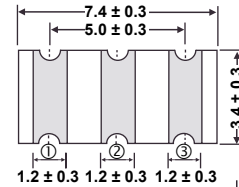


Electrical Specifications:

Part Number *	Frequency Range (MHz)	
RTCC_ _ _ MG	1.80 - 10.00MHz	
RTCS_ _ _ MT	7.00 - 13.00MHz	
RTCV_ _ _ MT	7.00 - 13.00MHz	
RTCS_ _ _ MX	13.01 - 50.00MHz	
RTCV_ _ _ MX	13.01 - 50.00MHz	
Resonant Resistance (ESR) by Frequency Range	1.80 - 1.99MHz	≤100Ω
	2.00 - 2.99MHz	≤80Ω
	3.00 - 3.49MHz	≤50Ω
	3.50 - 6.99MHz	≤30Ω
	7.00 - 12.99MHz	≤25Ω
	13.00 - 50.00MHz	≤40Ω
C1 = C2 Capacitance Values (±20%)	30pF Standard (or specify 5, 10, 15, 20, 22, 33, 39, 47 pF)	
Operating Temperature	- 20°C to 80°C	
Storage Temperature	- 55°C to 85°C	
Frequency Tolerance (at 25°C)	± 0.5% max.	
Frequency Stability (over temp. range)	± 0.3% max.	
Aging for 10 years	± 0.3% max.	
Rating Voltage	DC Voltage 6VDC AC Voltage 15Vpp	
Withstanding Voltage	100VDC, 5 sec max.	
Insulation Resistance	500MΩ min. at 10VDC	

Dimensions (mm):

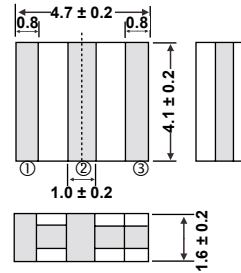
RTCC



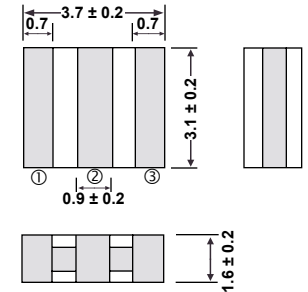
Connection:

- #1: IN / OUT
- #2: GROUND
- #3: OUT / IN

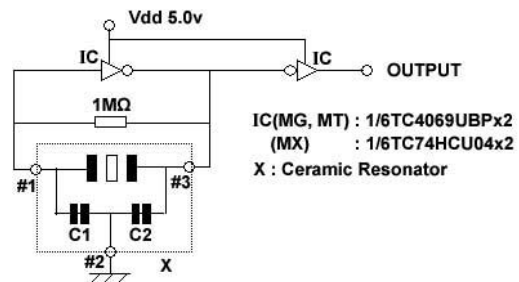
RTCS



RTCV



Test Circuit:



Part Numbering System:

RTCC **25.00** **MG** **TR**

① ② ③ ④ ⑤

① Series

RTCC
RTCS
RTCV

② Frequency

Frequency
1.80 ~ 50.00

③ Type

Type
MG
MT
MX

④ C1 = C2 Capacitance

Code	Capacitance
Nil	30pF (Standard)
47	47pF
:	:
5	5pF

⑤ Packing

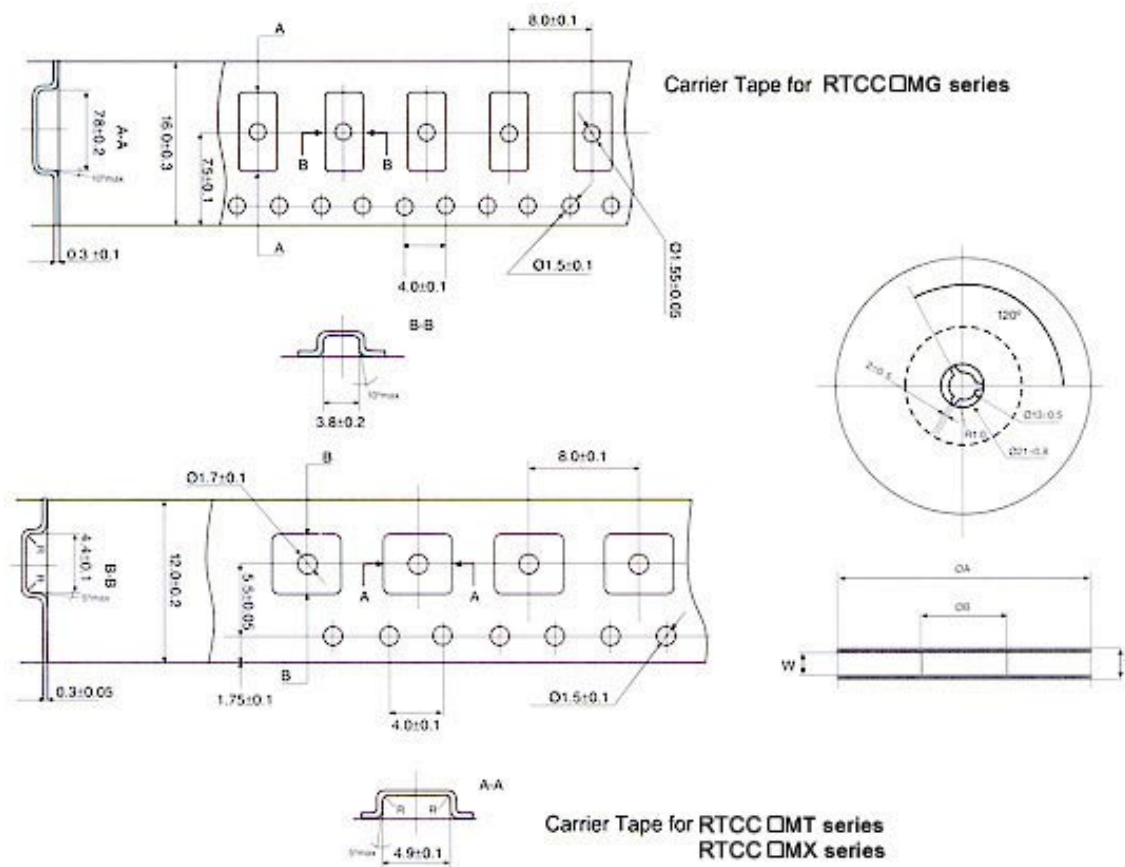
Code	Packing
TR	Tape & Reel

Remark: Specifications are subject to change without prior notice. Please confirm with our sales engineer.

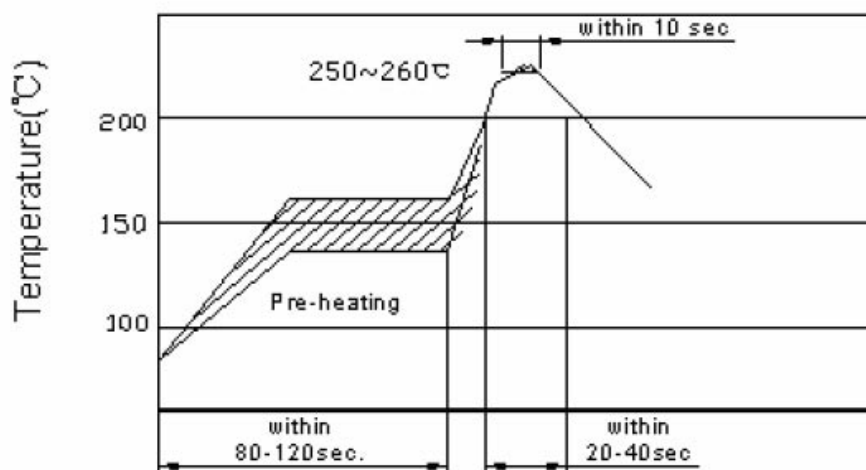
(Built-in Capacitors)

(3 Pads SMD)

Tape Specification:



Recommended Reflow Soldering:



Remark: Specifications are subject to change without prior notice. Please confirm with our sales engineer.